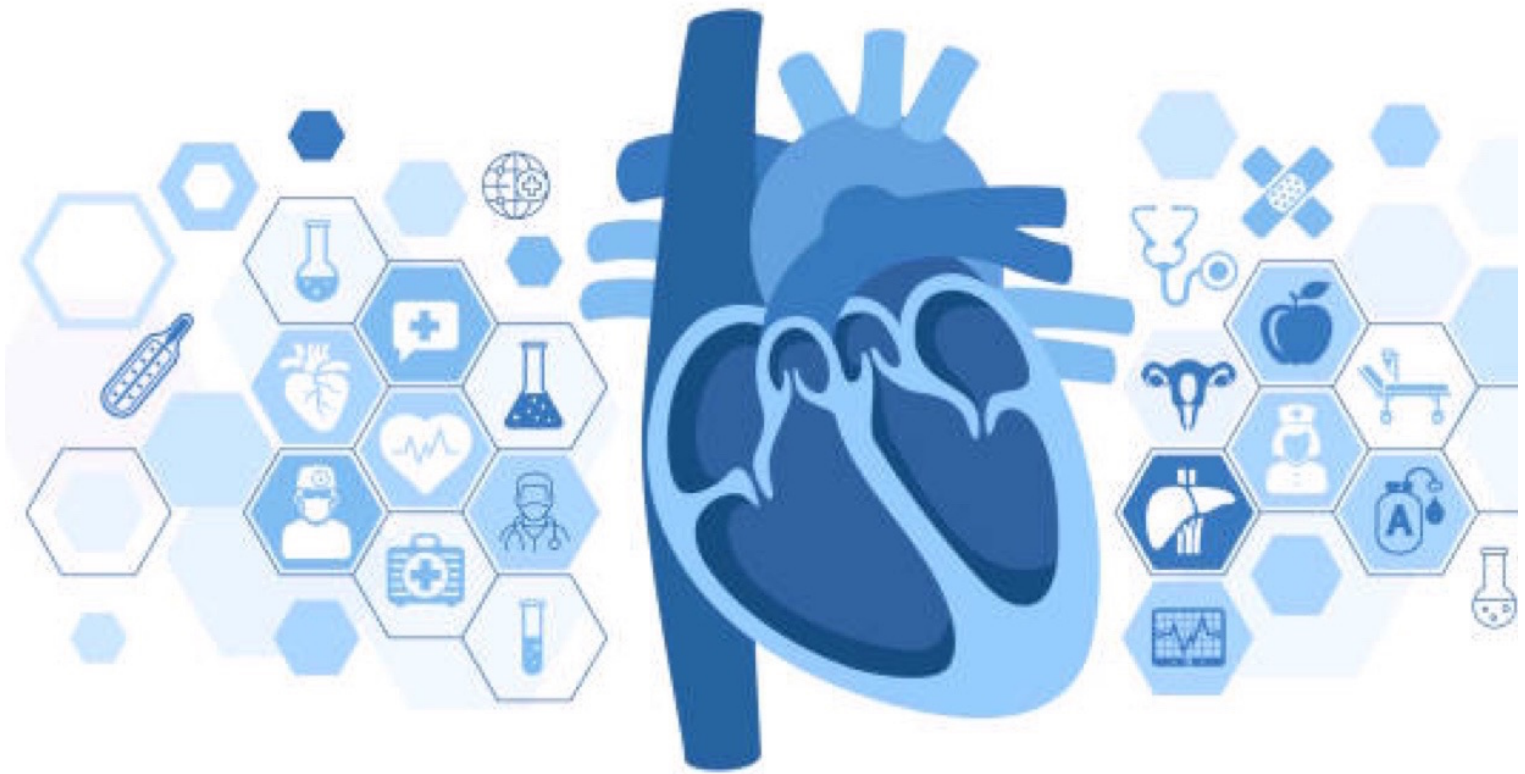


BULLDOG CLAMP



Specializing in high quality delicate surgical instruments

Bulldog Clamps

Titanium



V (Vein)
Low Pressure
110g+/-10g



A (Artery)
High Pressure
220g+/-20g

Bulldog Clamps

Straight



Identification	V (Vein)	A (Artery)	V (Vein)	A (Artery)	V (Vein)	A (Artery)	V (Vein)	A (Artery)
Product number	ITC1030	ITC1031	ITC1032	ITC1033	ITC1034	ITC1035	ITC1036	ITC1037
Total Length	30mm		35mm		40mm		45mm	
Length of Jaw	10mm		15mm		15mm		20mm	
Weight	1gr.		1gr.		1gr.		1.5gr.	

Bulldog Clamps

Titanium Slightly curved



Identification	V (Vein)	A (Artery)	V (Vein)	A (Artery)	V (Vein)	A (Artery)	V (Vein)	A (Artery)
Product number	ITC1038	ITC1039	ITC1040	ITC1041	ITC1042	ITC1043	ITC1044	ITC1045
Total Length	30mm		35mm		40mm		45mm	
Length of Jaw	10mm		15mm		15mm		20mm	
Weight	1gr.		1gr.		1gr.		1.5gr.	

Titanium Strongly curved



Identification	V (Vein)	A (Artery)	V (Vein)	A (Artery)	V (Vein)	A (Artery)	V (Vein)	A (Artery)
Product number	ITC1046	ITC1047	ITC1048	ITC1049	ITC1050	ITC1051	ITC1052	ITC1053
Total Length	30mm		35mm		40mm		45mm	
Length of Jaw	10mm		15mm		15mm		20mm	
Weight	1gr.		1gr.		1gr.		1.5gr.	